



NAVARASAM ARTS AND SCIENCE COLLEGE FOR WOMEN

ARACHALUR, ERODE-638101

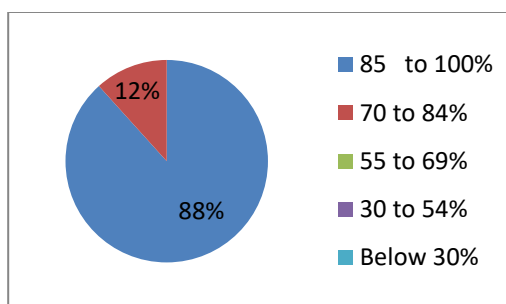
**Re-Accredited with "B" Grade Status by NAAC, Bangalore.
(Affiliated to BHARATHIAR UNIVERSITY, Coimbatore and
Approved by UGC & AICTE, New Delhi)**

STUDENT SATISFACTION SURVEY FOR THE YEAR 2018-2019

The Students Satisfaction Survey focuses on the overall learning experiences of the students. A total of 1472 responses were collected from UG and PG students. Majority (89%) of the students were satisfied with the syllabus covered. Majority (67%) of the student population agreed that the teacher taking class with proper preparation and the majority of students (65%) agreed that the teachers have effective communication skill. Majority (58%) of the students were satisfied with the Internal evaluation system. 51% of the students mentioned that the mentors identified their strengths and weakness to guide them towards pursuing their goal. Majority (68%) of the students agreed that faculties satisfied with the competencies, course outcomes and programme outcomes. Majority (59%) of the students were satisfied with the explanations of the concepts through examples and applications. Majority (59%) of the students agreed that teachers were able to identify their weakness and help them to overcome it. Majority (72%) of the students were satisfied with the teachers motivation to participate in extracurricular activities and needed opportunities in sports and cultural events. Majority (61%) of the students agreed with the efforts made by the institute/teachers to inculcate skill development and employability skills. Majority (75%) of the students were satisfied with the use of ICT tools such as LCD projector, Multimedia, etc., while teaching. Majority (59%) of the students were satisfied with the placement opportunities provided to students by inviting various companies and industries. Majority (72%) of the students were satisfied with internal assessments which helped the students to face the semester exams.

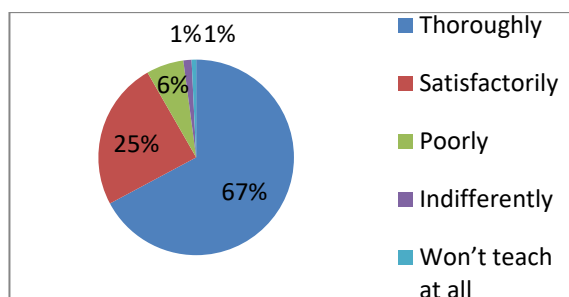
1. How much of the syllabus was covered by the teacher.

- a) 85 to 100%
- b) 70 to 84%
- c) 55 to 69%
- d) 30 to 54%
- e) Below 30%



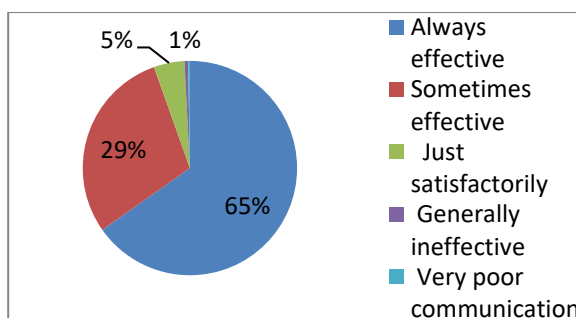
2. Whether the teacher is taking class with proper preparation.

- a) Thoroughly
- b) Satisfactorily
- c) Poorly
- d) Indifferently
- e) Won't teach at all



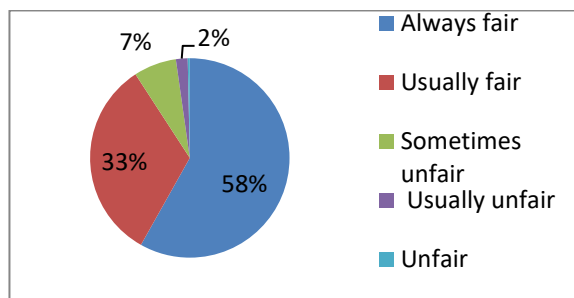
3. Whether the teacher is having effective communicative skill

- a) Always effective
- b) Sometimes effective
- c) Just satisfactorily
- d) Generally ineffective
- e) Very poor communication



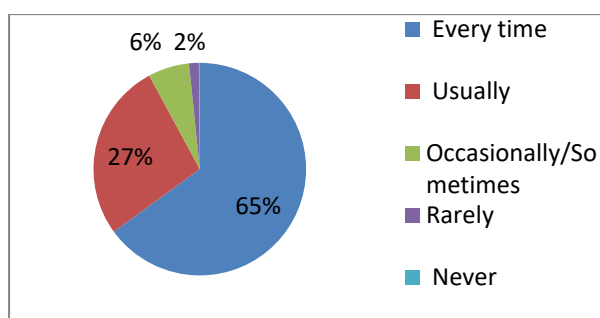
4. Internal evaluation is done properly by the respective teacher

- a) Always fair
- b) Usually fair
- c) Sometimes unfair
- d) Usually unfair
- e) Unfair



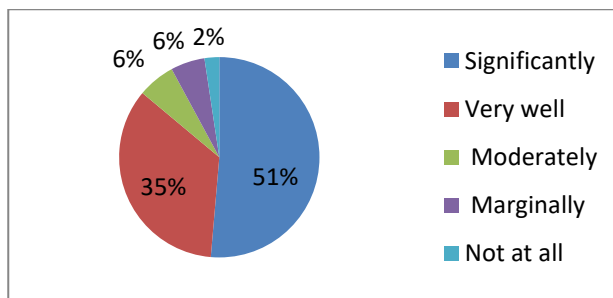
5. The teacher is having assessment of the subject

- a) Every time
- b) Usually
- c) Occasionally/Sometimes
- d) Rarely
- e) Never



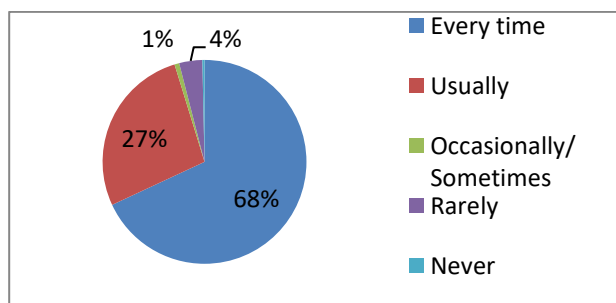
6. Whether the department is properly performing mentoring system

- a) Significantly
- b) Very well
- c) Moderately
- d) Marginally
- e) Not at all



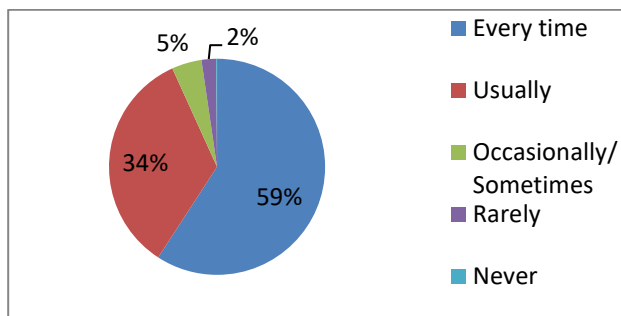
7. Teachers inform you about your expected competencies, course outcomes and programme outcomes.

- a) Every time
- b) Usually
- c) Occasionally/ Sometimes
- d) Rarely
- e) Never



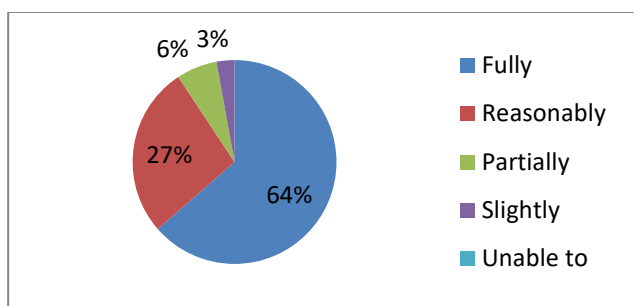
8. The Teachers illustrate the concepts through examples and applications.

- a) Every time
- b) Usually
- c) Occasionally/ Sometimes
- d) Rarely
- e) Never



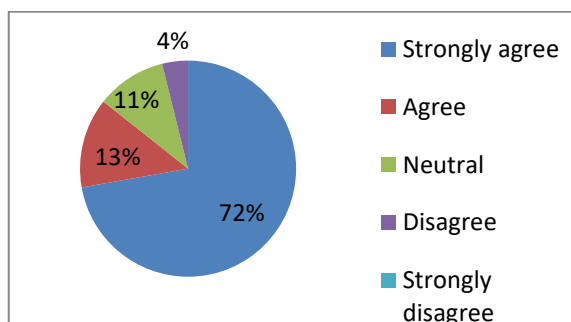
9. The teachers identify your strengths and weakness and help to overcome the weak students.

- a) Fully
- b) Reasonably
- c) Partially
- d) Slightly
- e) Unable to



10. Teachers encourage you to participate in extracurricular activities.

- a) Strongly agree
- b) Agree
- c) Neutral
- d) Disagree
- e) Strongly disagree



11. Does the institution provide activities needed opportunities in sports and cultural.

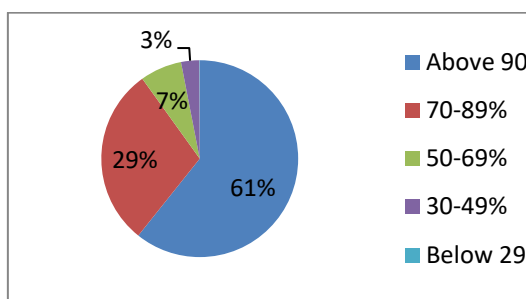
Above 90%

70-89%

50-69%

30-49%

Below 29%



12. Efforts are made by the institute/teachers to inculcate skill development and experience and also further opportunity for employment

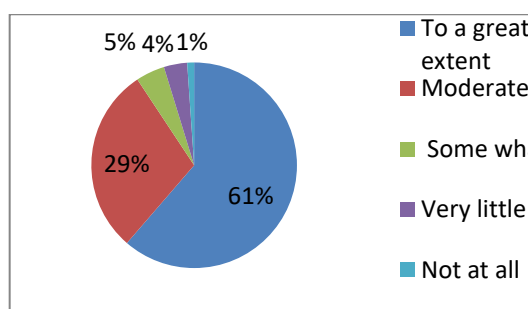
a) To a great extent

b) Moderate

c) Some what

d) Very little

e) Not at all



13. What Percentage of teachers use ICT tools such as LCD projector, Multimedia, etc., while teaching

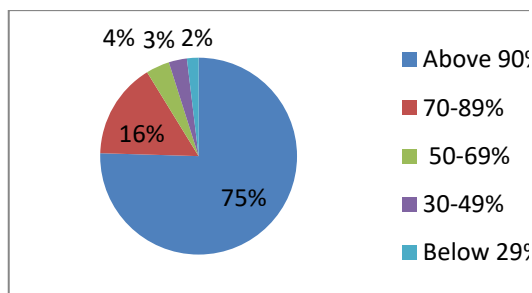
a) Above 90%

b) 70-89%

c) 50-69%

d) 30-49%

e) Below 29%



14. The institution provide placement opportunities to students by inviting various companies and industries.

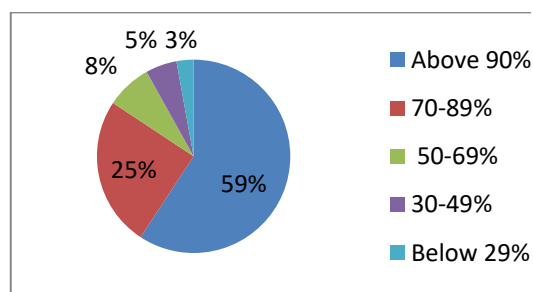
a) Above 90%

b) 70-89%

c) 50-69%

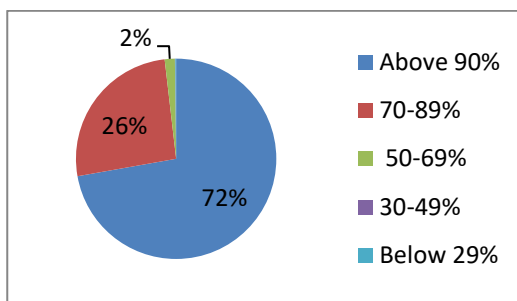
d) 30-49%

e) Below 29%



15. Does the model examination helps the students to write semester exam perfectly and correctly

- a) Above 90%
- b) 70-89%
- c) 50-69%
- d) 30-49%
- e) Below 29%



16. Observations/ Suggestions by the students to improve the overall teaching –learning experience of the institution.

- 1.To start a book- bank system for students
2. To increase number of LCD class rooms
3. To motivate students to participate in sports
4. To arrange more seminars, workshops and conferences.
5. To inspire the students to participate in various inter intra college cultural programmes
6. To increase field visit and educational tour.